

Research Data Brief – February 2024

Increased Volume of Uninsured Pediatric Patients at Community Health Centers During the Unwinding of Continuous Medicaid Coverage

Wyatt P. Bensken, PhD^{1,2}; Jenine Dankovchik¹; Hannah L. Fein, MS, MPH¹; Gabrielle Duhon, MPH¹; Marion R. Sills, MD, MPH^{1,3}

KEY FINDINGS

- In the first months of unwinding, there was a 30% relative increase in the percent of encounters for uninsured pediatric patients, from 9.8% of visits in March to 12.8% of visits in December.
- The increase in uninsured patients corresponds with a decrease in the number of encounters for Medicaid-insured patients.
- While there was variation in these trends across states, all experienced similar patterns.

Medicaid plays a key role in reducing health disparities among populations, and disruptions in Medicaid coverage associated with the required recertification of eligibility is associated with poor health outcomes.¹⁻⁵ The U.S. Families First Coronavirus Response Act and the COVID-19 Public Health Emergency incentivized states to provide continuous Medicaid coverage.⁶ However, the Consolidated Appropriations Act, 2023 required states to resume standard redeterminations, and this could begin as early as April 1, 2023.⁷ Community health centers serve patients regardless of their ability to pay, creating a care setting where the immediate effects of this unwinding can be observed. **This Research Data Brief details changes in pediatric payer mix among community-based health care organizations before, during, and after continuous coverage.**

With the federal COVID-19 Public Health Emergency (PHE) and the Families First Coronavirus Response Act, states were eligible for additional federal Medicaid funding but were [prohibited from disenrolling Medicaid-insured patients through routine redeterminations](#). However, all states were required to resume enrollment determinations beginning April 1, 2023, and complete these within a 12-month period of “unwinding” of the PHE’s three years of continuous coverage. Given that Medicaid coverage improves preventive health services utilization and outcomes, the [American Academy of Pediatrics](#) has raised concerns about how unwinding affects the [positive impact](#) that continuous Medicaid coverage has on child health outcomes.

The loss of coverage during unwinding may also exert detrimental financial effects on our nation’s primary care community health centers (CHCs) where Medicaid is the [largest source of revenue](#). CHCs provide critical health care that addresses [barriers](#), including the ability to pay, for [over 30 million people in the United States, including one in nine children](#). However, CHCs have [narrow financial margins](#) and serve patients facing greater social risk and medical complexity. These CHCs are particularly exposed to the impact of the unwinding of continuous Medicaid coverage, since an increase in uninsured patients could have negative financial implications on the clinics when coupled with a decrease in Medicaid reimbursements. Understanding changes in the volume of uninsured patients due to Medicaid unwinding in the CHC setting is critical for clinic leaders to be prepared to support their organization through sudden financial changes, while providing evidence for policymakers on the risk that Medicaid unwinding has on the [sustainability](#) of our country’s community-based primary care infrastructure.

Contents

- Encounter Payer Mix and Volume..... 2
- State Variation in Payer Mix and Volume 5
- Summary 7
- Data Source & Methods 8
- Author Affiliations & Acknowledgements 8
- Tables..... 8
- References..... 17

Support for this research was provided by the Robert Wood Johnson Foundation. The views expressed here do not necessarily reflect the views of the Foundation. **Citation:** Bensken WP, Dankovchik J, Fein H, Duhon G, Sills MR. Increased Volume of Uninsured Pediatric Patients at Community Health Centers During the Unwinding of Continuous Medicaid Coverage. OCHIN. Portland, OR. February 2024.

<https://advancecollaborative.org/medicaid-policy-impact-marginalized-populations/>

Encounter Payer Mix and Volume

Prior to the COVID-19 Pandemic

- In 2019, prior to the COVID-19 pandemic as a baseline, uninsured patients accounted for 10-11% of pediatric encounters within a single network of community-based health care organizations, with roughly 80% of encounters being for Medicaid-insured patients.

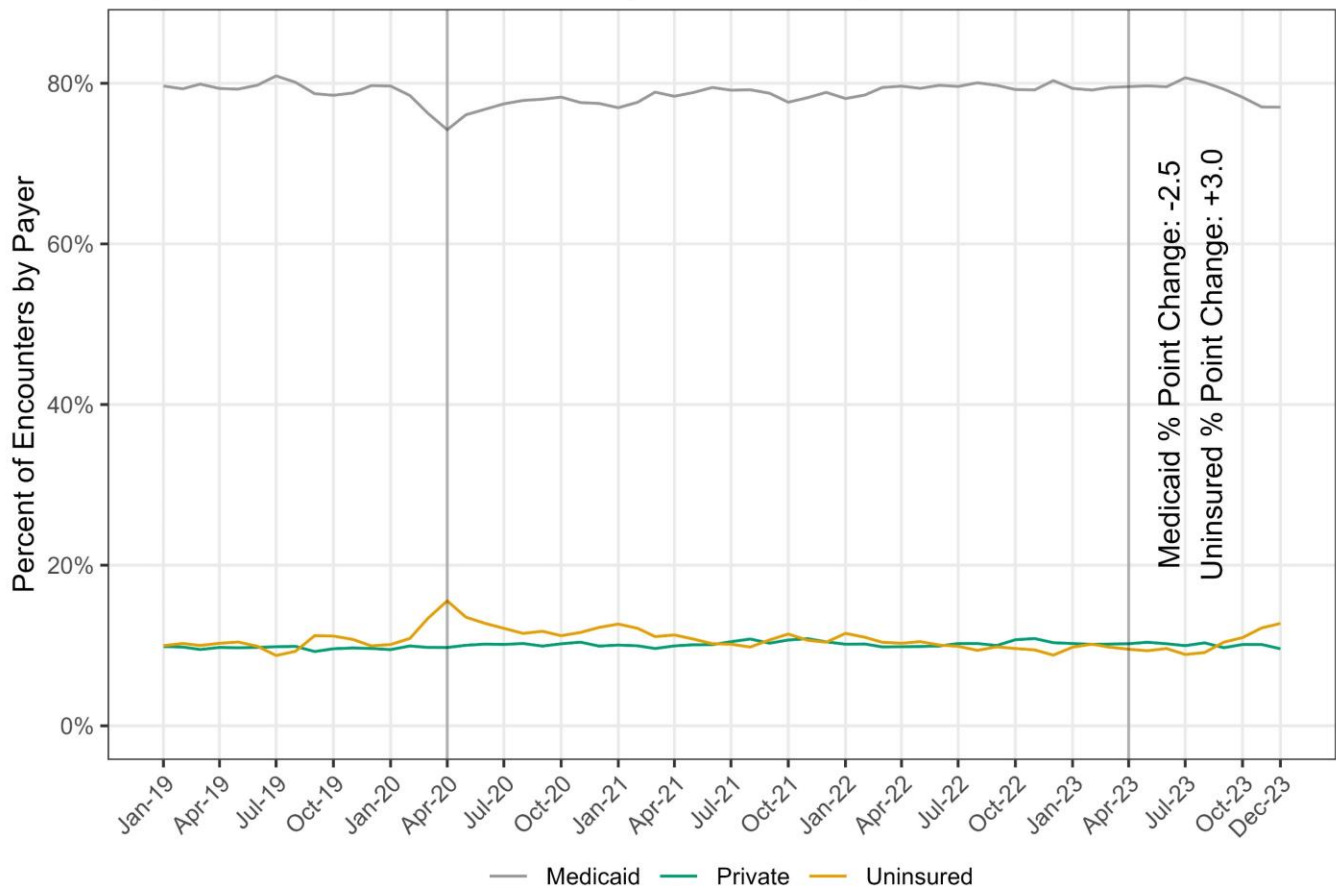
During Continuous Medicaid Coverage Provisions

- When the COVID-19 pandemic started, in **April 2020**, uninsured pediatric patients accounted for **15.6%** of all encounters and Medicaid-insured patients accounted for 74.2% of encounters.
- During **continuous coverage**, **11.3% (2021) to 10.3% (2022)** of encounters of pediatric patients were **uninsured**, and 78.6% (2021) to 79.5% (2022) were Medicaid-insured.

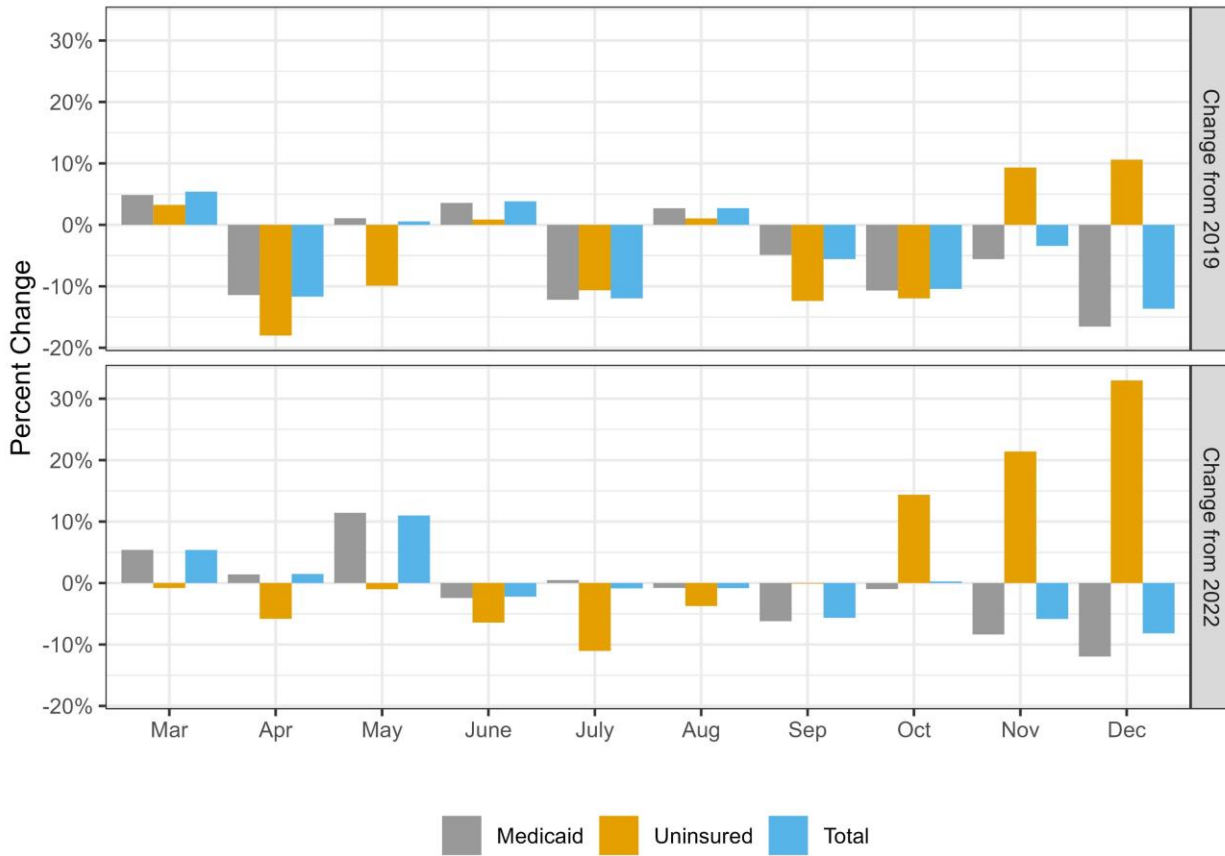
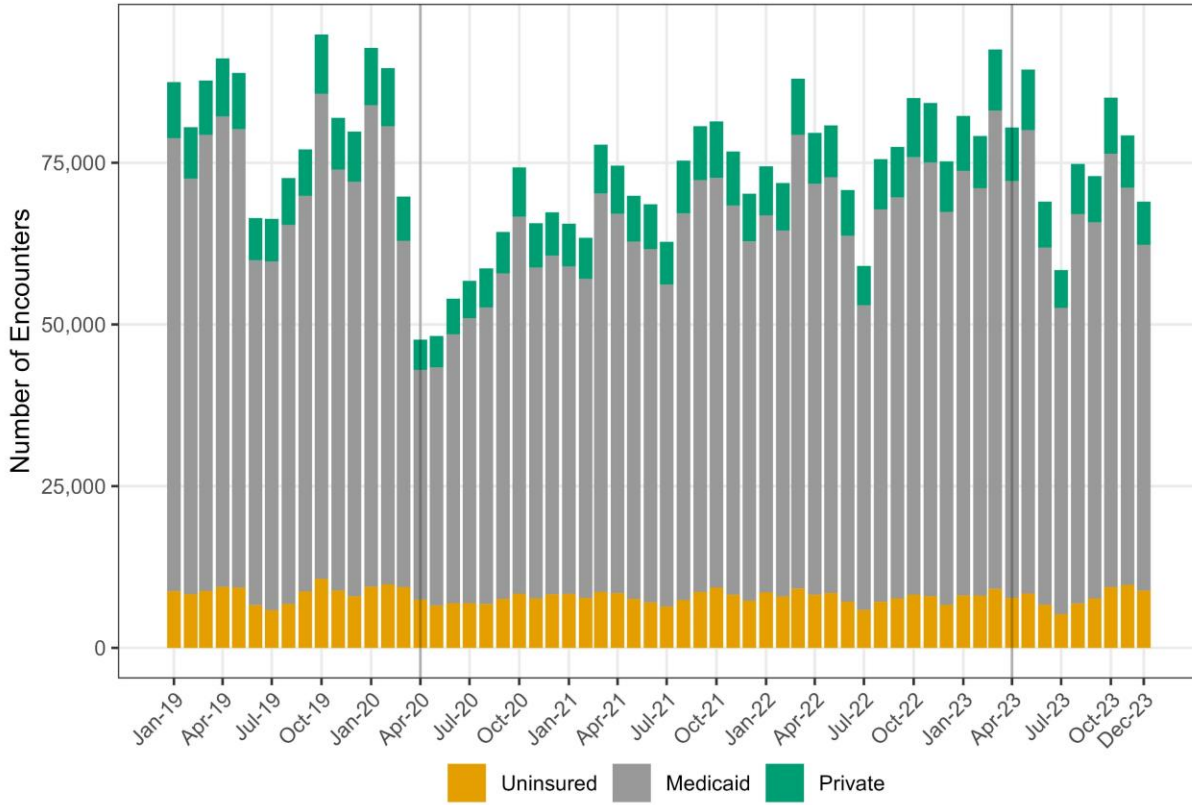
During the Unwinding of Continuous Medicaid Coverage

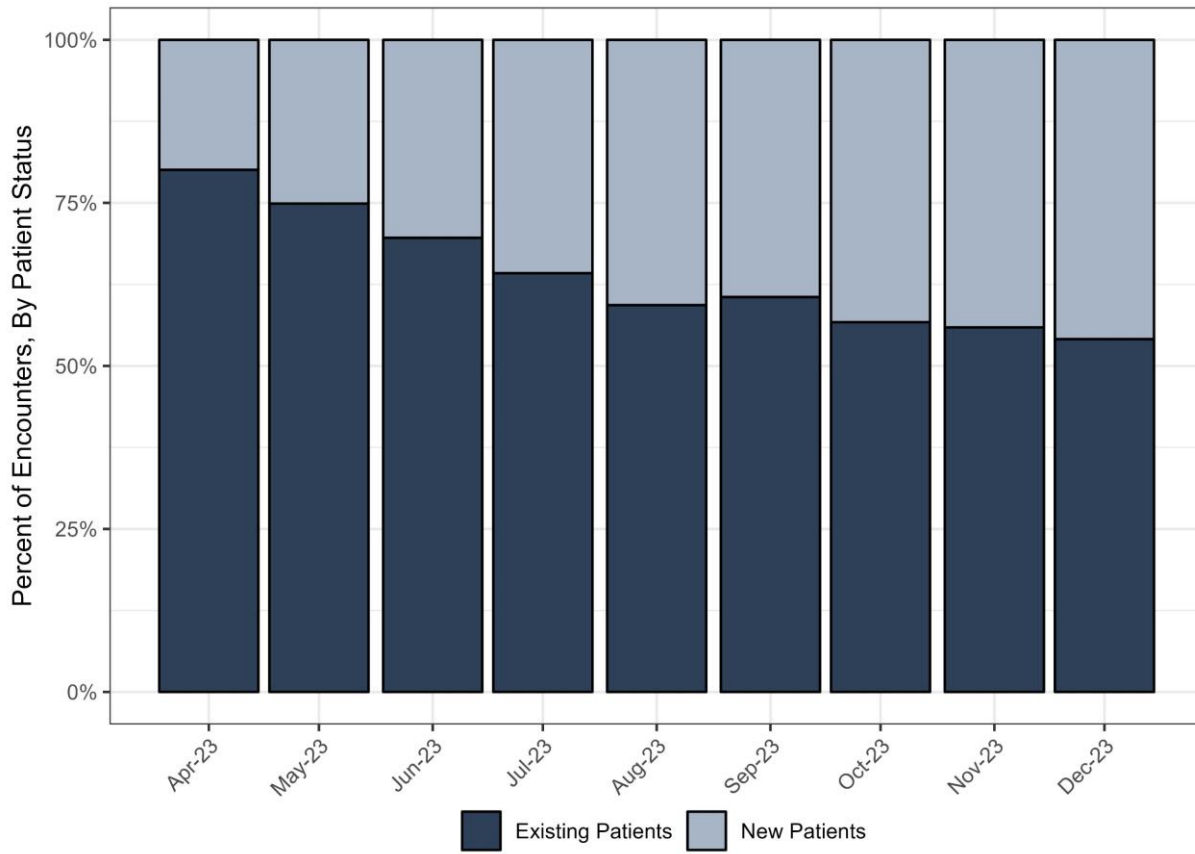
- During unwinding, there was a **30% relative increase in the percent of encounters for uninsured patients: 9.8% (n = 9,110) in March 2023 to 12.8% (n = 8,851) in December 2023**
- At the same time, there was a decrease in the number of encounters for Medicaid-insured patients from 73,939 (March 2023) to a low of 47,353 (July 2023).
- **Compared to December 2022**, in **December 2023** there were 8% fewer encounters, including 12% fewer Medicaid-insured encounters, yet **33% more uninsured encounters**
- A **growing share of uninsured encounters were new patients**, rising to **45.9% in November 2023** up from **19.9% in April 2023**

Payer Mix, Pediatric Encounters (N = 4,484,884)



Encounter Volume, Pediatric Encounters (N = 4,484,884)

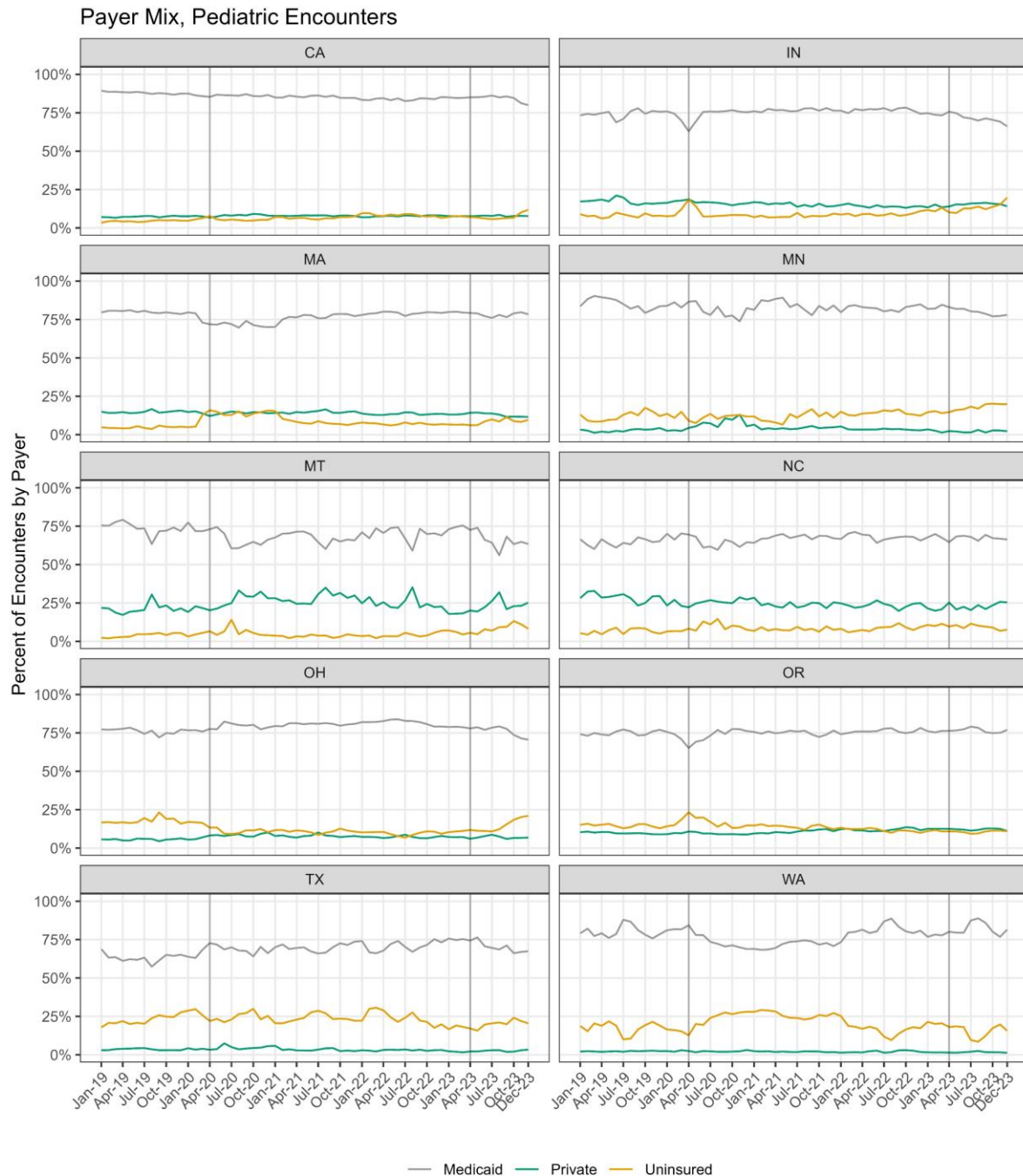




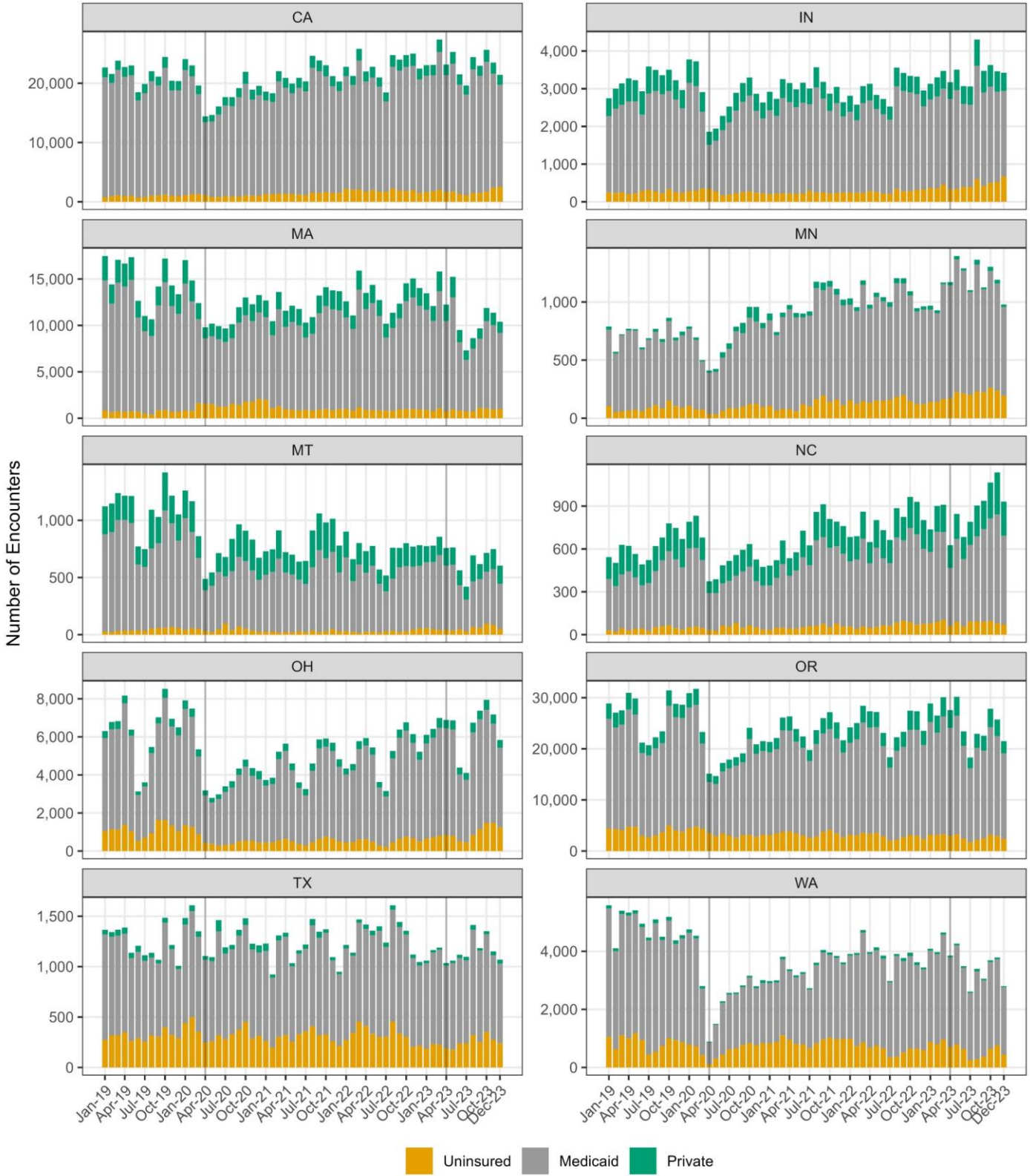
New patients were defined as those *without* a visit between January 1, 2021 and March 30, 2023.

State Variation in Payer Mix and Volume

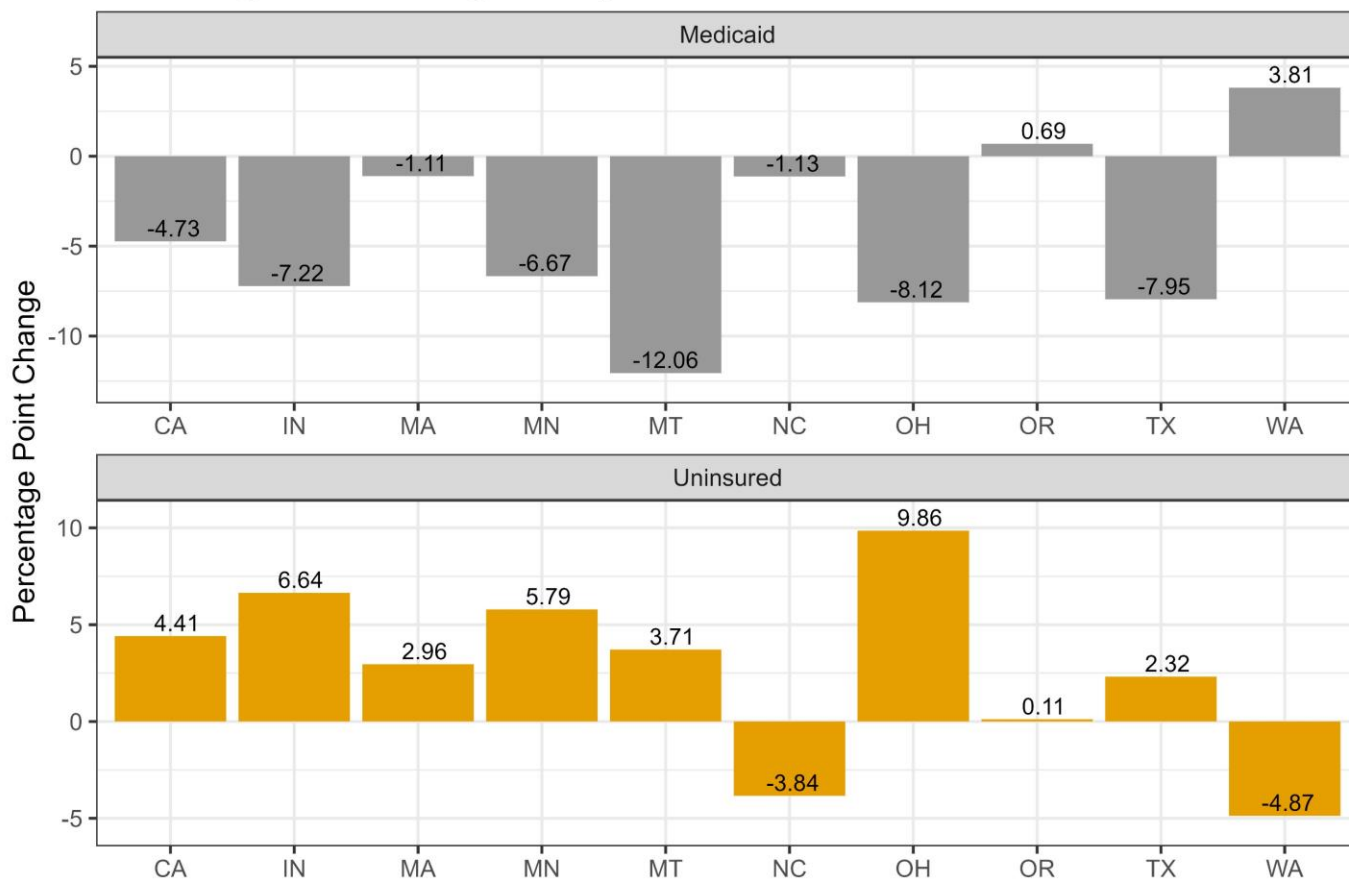
- Of the states where there were clinics with sufficient patients for analysis (CA, IN, MA, MN, MT, NC, OH, OR, TX, and WA), similar trends were seen across all. **During unwinding, increases were seen in the percentage and number of encounters of uninsured patients, with corresponding decreases in Medicaid-insured patients.**
- The patterns and magnitude of these trends varied across states. This may speak to **differences in re-enrollment processes and timelines** and **variation in the size, services, and type of clinics in each state that are in this health care network.**



Encounter Volume, Pediatric Encounters



Percentage Point Change in Payer Mix, December 2023 vs March 2023



Summary

At the start of the COVID-19 pandemic, community-based health care organizations experienced an increase in uninsured and decrease in Medicaid-insured pediatric patients. During the period of continuous Medicaid coverage, these organizations experienced a decrease in uninsured patients and an increase in Medicaid-insured patients. However, since the unwinding of continuous Medicaid coverage began, we have seen increasing uninsured patients and decreasing Medicaid-insured patients, approaching the payer mix observed at the start of the pandemic. This higher volume of uninsured patients and lower volume of Medicaid-insured patients most likely reflects Medicaid disenrollment. Importantly, while all the states we were able to examine had similar global trends, there were also notable differences. This is most likely the result of disenrollment processes and timing being state driven, but also may be amplified by differences in members across states. It is important to note that these encounter-based data have limitations. A patient encounter may initially be classified as uninsured, but then changed to Medicaid-insured over the subsequent weeks. We are unable to assess if this is caused by the patient determining that they are eligible for Medicaid and reenrolled, and thus retroactively paid for the encounter, or if the patient was Medicaid-insured the entire time and the clinic is reconciling billing. This pattern results in changes to the payer record on previous encounters over time. Regardless of this limitation, these initial findings confirm what was expected: the unwinding of continuous Medicaid coverage is leading to an increasing volume of uninsured pediatric patients.

Data Source & Methods

This work was approved by the Advarra Institutional Review Board (IRB).

Data Source

The data for this study come from OCHIN, a nationwide network of community-based health care organizations that share a single instance of Epic © electronic health record (EHR). OCHIN's EHR data are supported and made research-ready by Accelerating Data Value Across a National Community Health Center Network (ADVANCE) Clinical Research Network (CRN) which is one of the eight partners in the National Patient-Centered Clinical Research Network (PCORnet).

Study Population and Inclusion Criteria

We identified all ambulatory or telehealth encounters for patients aged 0 to 17 from January 1, 2019, through November 30, 2023, at behavioral health or mental health, community health centers, free clinics, public health departments, rural health centers, specialty clinics, tribal or Indian health, and social service organizations. For a consistent clinic sample across all years, we limited to encounters from those organizations that went live on the OCHIN Epic EHR before 2019. The following states had encounters but were excluded from this Research Data Brief due to small counts: Alaska, New York, Missouri, and Colorado. Additionally, organizational changes in Georgia and Wisconsin yielded unreliable results due to a sharp increase in the total number of pediatric patients.

Outcomes of Interest

For this Research Data Brief, we focus on the primary payer categorized for research purposes as: Private, Medicaid, Medicare, Other Public, and Uninsured, with missing being dropped for analysis. For simplicity, we do not display the small percentage of patients who are Medicare or Other Public insured.

Analyses

We calculated the percentage of encounters by payer for each month. To examine if changes were due to new or existing patients, we evaluated the volume of uninsured encounters that were from new or existing patients. In addition to overall trends, we also report data by state. We defined new patients as those that did not have a visit at an OCHIN member clinic between January 1, 2021, and March 30, 2023.

Author Affiliations & Acknowledgements

Author Affiliations

¹Research Department, OCHIN, Portland, OR; ²Case Western Reserve University, Cleveland, OH; ³University of Colorado, Aurora, CO

Acknowledgements

Support for this research was provided by the Robert Wood Johnson Foundation. The views expressed here do not necessarily reflect the views of the Foundation. This work was conducted with the Accelerating Data Value Across a National Community Health Center Network (ADVANCE) Clinical Research Network (CRN). ADVANCE is a Clinical Research Network in PCORnet®, which has been developed with funding from PCORI®. ADVANCE is led by OCHIN in partnership with Health Choice Network, Fenway Health, and Oregon Health & Science University. ADVANCE's participation in PCORnet® is funded through the PCORI Award RI-OCHIN-01-MC. The authors would also like to thank Frances Biel, MPH, and Josh Lemieux at OCHIN for their assistance.

Tables

Table 1. Payer Mix by Month

| | Payer, n (%) | | | | Payer, n (%) | | |
|-----------|---------------|-------------|--------------|-----------|---------------|-------------|--------------|
| | Medicaid | Private | Uninsured | | Medicaid | Private | Uninsured |
| Jan, 2019 | 70,023 (79.7) | 8,667 (9.9) | 8,773 (10.0) | Apr, 2022 | 63,562 (79.6) | 7,857 (9.8) | 8,202 (10.3) |

| | Payer, n (%) | | | | Payer, n (%) | | |
|-----------|---------------|--------------|---------------|-----------|---------------|--------------|--------------|
| | Medicaid | Private | Uninsured | | Medicaid | Private | Uninsured |
| Feb, 2019 | 64,246 (79.3) | 7,946 (9.8) | 8,306 (10.3) | May, 2022 | 64,284 (79.4) | 8,001 (9.9) | 8,490 (10.5) |
| Mar, 2019 | 70,501 (79.9) | 8,385 (9.5) | 8,823 (10.0) | Jun, 2022 | 56,597 (79.8) | 7,055 (9.9) | 7,136 (10.1) |
| Apr, 2019 | 72,761 (79.4) | 8,951 (9.8) | 9,422 (10.3) | Jul, 2022 | 47,122 (79.6) | 6,065 (10.2) | 5,861 (9.9) |
| May, 2019 | 70,867 (79.3) | 8,689 (9.7) | 9,328 (10.4) | Aug, 2022 | 60,672 (80.1) | 7,766 (10.2) | 7,121 (9.4) |
| Jun, 2019 | 53,307 (79.8) | 6,526 (9.8) | 6,620 (9.9) | Sep, 2022 | 62,019 (79.8) | 7,778 (10.0) | 7,650 (9.8) |
| Jul, 2019 | 53,929 (80.9) | 6,562 (9.8) | 5,836 (8.8) | Oct, 2022 | 67,643 (79.2) | 9,150 (10.7) | 8,218 (9.6) |
| Aug, 2019 | 58,613 (80.1) | 7,240 (9.9) | 6,784 (9.3) | Nov, 2022 | 67,046 (79.2) | 9,202 (10.9) | 8,004 (9.5) |
| Sep, 2019 | 61,157 (78.7) | 7,187 (9.3) | 8,723 (11.2) | Dec, 2022 | 60,734 (80.3) | 7,825 (10.4) | 6,656 (8.8) |
| Oct, 2019 | 75,001 (78.5) | 9,166 (9.6) | 10,674 (11.2) | Jan, 2023 | 65,662 (79.4) | 8,479 (10.2) | 8,103 (9.8) |
| Nov, 2019 | 65,047 (78.8) | 8,004 (9.7) | 8,889 (10.8) | Feb, 2023 | 62,975 (79.2) | 8,069 (10.1) | 8,091 (10.2) |
| Dec, 2019 | 64,078 (79.7) | 7,743 (9.6) | 8,003 (10.0) | Mar, 2023 | 73,939 (79.5) | 9,469 (10.2) | 9,110 (9.8) |
| Jan, 2020 | 74,440 (79.7) | 8,869 (9.5) | 9,459 (10.1) | Apr, 2023 | 64,450 (79.6) | 8,276 (10.2) | 7,725 (9.5) |
| Feb, 2020 | 70,830 (78.5) | 8,974 (9.9) | 9,823 (10.9) | May, 2023 | 71,635 (79.7) | 9,355 (10.4) | 8,404 (9.3) |
| Mar, 2020 | 53,526 (76.3) | 6,851 (9.8) | 9,395 (13.4) | Jun, 2023 | 55,208 (79.6) | 7,090 (10.2) | 6,677 (9.6) |
| Apr, 2020 | 35,536 (74.2) | 4,669 (9.8) | 7,449 (15.6) | Jul, 2023 | 47,353 (80.7) | 5,857 (10.0) | 5,214 (8.9) |
| May, 2020 | 36,813 (76.1) | 4,853 (10.0) | 6,545 (13.5) | Aug, 2023 | 60,193 (80.1) | 7,762 (10.3) | 6,855 (9.1) |
| Jun, 2020 | 41,575 (76.8) | 5,510 (10.2) | 6,907 (12.8) | Sep, 2023 | 58,163 (79.3) | 7,136 (9.7) | 7,643 (10.4) |
| Jul, 2020 | 44,068 (77.4) | 5,766 (10.1) | 6,910 (12.1) | Oct, 2023 | 66,988 (78.3) | 8,666 (10.1) | 9,398 (11.0) |
| Aug, 2020 | 45,859 (77.9) | 6,037 (10.3) | 6,776 (11.5) | Nov, 2023 | 61,428 (77.1) | 8,071 (10.1) | 9,718 (12.2) |
| Sep, 2020 | 50,299 (78.0) | 6,401 (9.9) | 7,590 (11.8) | Dec, 2023 | 53,469 (77.0) | 6,657 (9.6) | 8,851 (12.8) |
| Oct, 2020 | 58,316 (78.3) | 7,608 (10.2) | 8,360 (11.2) | | | | |
| Nov, 2020 | 51,132 (77.6) | 6,865 (10.4) | 7,657 (11.6) | | | | |
| Dec, 2020 | 52,357 (77.5) | 6,708 (9.9) | 8,277 (12.3) | | | | |
| Jan, 2021 | 50,637 (77.0) | 6,616 (10.1) | 8,338 (12.7) | | | | |
| Feb, 2021 | 49,350 (77.6) | 6,332 (10.0) | 7,717 (12.1) | | | | |
| Mar, 2021 | 61,600 (78.9) | 7,517 (9.6) | 8,673 (11.1) | | | | |
| Apr, 2021 | 58,645 (78.4) | 7,444 (9.9) | 8,464 (11.3) | | | | |
| May, 2021 | 55,243 (78.8) | 7,069 (10.1) | 7,574 (10.8) | | | | |
| Jun, 2021 | 54,621 (79.5) | 6,945 (10.1) | 7,029 (10.2) | | | | |
| Jul, 2021 | 49,791 (79.1) | 6,591 (10.5) | 6,395 (10.2) | | | | |
| Aug, 2021 | 59,779 (79.2) | 8,157 (10.8) | 7,405 (9.8) | | | | |
| Sep, 2021 | 63,676 (78.8) | 8,319 (10.3) | 8,645 (10.7) | | | | |
| Oct, 2021 | 63,351 (77.6) | 8,718 (10.7) | 9,323 (11.4) | | | | |
| Nov, 2021 | 60,184 (78.2) | 8,350 (10.9) | 8,201 (10.7) | | | | |
| Dec, 2021 | 55,528 (78.9) | 7,360 (10.5) | 7,328 (10.4) | | | | |
| Jan, 2022 | 58,277 (78.1) | 7,583 (10.2) | 8,590 (11.5) | | | | |
| Feb, 2022 | 56,583 (78.5) | 7,340 (10.2) | 7,946 (11.0) | | | | |
| Mar, 2022 | 70,152 (79.5) | 8,672 (9.8) | 9,184 (10.4) | | | | |

Table 3. Payer Mix by State and Month. Due to small numbers, we do not display Medicare and Other Public and some cells (< 11) are masked.

| | Payer, n (%) | | | | | | | | |
|-----------|---------------|-------------|-------------|--------------|------------|------------|---------------|--------------|--------------|
| | Medicaid | Private | Uninsured | Medicaid | Private | Uninsured | Medicaid | Private | Uninsured |
| | California | | | Indiana | | | Massachusetts | | |
| Jan, 2019 | 20,273 (89.4) | 1,613 (7.1) | 771 (3.4) | 2,025 (73.4) | 475 (17.2) | 247 (8.9) | 14,009 (79.6) | 2,631 (14.9) | 838 (4.8) |
| Feb, 2019 | 19,121 (88.6) | 1,505 (7.0) | 943 (4.4) | 2,243 (74.3) | 528 (17.5) | 230 (7.6) | 11,717 (80.7) | 2,058 (14.2) | 638 (4.4) |
| Mar, 2019 | 21,135 (88.7) | 1,569 (6.6) | 1,102 (4.6) | 2,326 (73.7) | 562 (17.8) | 252 (8.0) | 13,881 (80.7) | 2,441 (14.2) | 739 (4.3) |
| Apr, 2019 | 20,137 (88.4) | 1,652 (7.3) | 948 (4.2) | 2,460 (74.8) | 608 (18.5) | 204 (6.2) | 13,518 (80.5) | 2,468 (14.7) | 685 (4.1) |
| May, 2019 | 20,314 (88.2) | 1,664 (7.2) | 1,018 (4.4) | 2,445 (75.6) | 560 (17.3) | 222 (6.9) | 14,167 (81.1) | 2,446 (14.0) | 739 (4.2) |
| Jun, 2019 | 16,397 (88.6) | 1,378 (7.4) | 710 (3.8) | 2,021 (68.8) | 620 (21.1) | 292 (9.9) | 10,147 (79.8) | 1,804 (14.2) | 699 (5.5) |
| Jul, 2019 | 17,539 (88.1) | 1,543 (7.7) | 801 (4.0) | 2,556 (71.0) | 715 (19.9) | 319 (8.9) | 8,896 (80.6) | 1,638 (14.8) | 481 (4.4) |
| Aug, 2019 | 19,284 (87.3) | 1,714 (7.8) | 1,044 (4.7) | 2,668 (76.0) | 557 (15.9) | 274 (7.8) | 8,487 (79.5) | 1,780 (16.7) | 393 (3.7) |
| Sep, 2019 | 18,580 (87.8) | 1,460 (6.9) | 1,079 (5.1) | 2,625 (77.9) | 503 (14.9) | 228 (6.8) | 11,305 (79.1) | 2,044 (14.3) | 842 (5.9) |
| Oct, 2019 | 21,410 (87.4) | 1,837 (7.5) | 1,195 (4.9) | 2,607 (74.4) | 562 (16.0) | 333 (9.5) | 13,779 (79.7) | 2,546 (14.7) | 882 (5.1) |
| Nov, 2019 | 17,759 (86.8) | 1,624 (7.9) | 1,032 (5.0) | 2,464 (76.2) | 509 (15.7) | 253 (7.8) | 11,399 (79.1) | 2,206 (15.3) | 700 (4.9) |
| Dec, 2019 | 17,842 (87.5) | 1,554 (7.6) | 965 (4.7) | 2,247 (75.7) | 479 (16.1) | 238 (8.0) | 10,561 (78.5) | 2,110 (15.7) | 693 (5.2) |
| Jan, 2020 | 21,113 (87.5) | 1,834 (7.6) | 1,121 (4.6) | 2,871 (75.9) | 618 (16.3) | 287 (7.6) | 13,670 (79.6) | 2,530 (14.7) | 836 (4.9) |
| Feb, 2020 | 19,895 (86.3) | 1,817 (7.9) | 1,290 (5.6) | 2,774 (74.4) | 651 (17.5) | 297 (8.0) | 11,800 (79.0) | 2,269 (15.2) | 778 (5.2) |
| Mar, 2020 | 16,886 (85.8) | 1,477 (7.5) | 1,256 (6.4) | 2,037 (69.9) | 519 (17.8) | 353 (12.1) | 9,084 (73.0) | 1,725 (13.9) | 1,598 (12.8) |
| Apr, 2020 | 12,325 (85.4) | 970 (6.7) | 1,113 (7.7) | 1,169 (63.0) | 345 (18.6) | 343 (18.5) | 7,044 (71.9) | 1,189 (12.1) | 1,556 (15.9) |
| May, 2020 | 12,737 (86.8) | 1,089 (7.4) | 820 (5.6) | 1,347 (69.4) | 319 (16.4) | 275 (14.2) | 7,317 (71.7) | 1,349 (13.2) | 1,525 (14.9) |
| Jun, 2020 | 13,926 (86.5) | 1,351 (8.4) | 805 (5.0) | 1,726 (75.6) | 384 (16.8) | 170 (7.4) | 7,248 (73.0) | 1,396 (14.1) | 1,268 (12.8) |
| Jul, 2020 | 15,273 (86.3) | 1,419 (8.0) | 972 (5.5) | 1,916 (75.8) | 421 (16.7) | 190 (7.5) | 6,975 (72.0) | 1,454 (15.0) | 1,240 (12.8) |
| Aug, 2020 | 15,239 (86.1) | 1,505 (8.5) | 903 (5.1) | 2,193 (75.7) | 474 (16.4) | 226 (7.8) | 7,079 (69.7) | 1,500 (14.8) | 1,543 (15.2) |
| Sep, 2020 | 16,736 (87.1) | 1,566 (8.2) | 889 (4.6) | 2,400 (76.0) | 496 (15.7) | 254 (8.0) | 8,880 (74.1) | 1,655 (13.8) | 1,416 (11.8) |
| Oct, 2020 | 18,864 (85.9) | 2,009 (9.1) | 1,058 (4.8) | 2,533 (76.7) | 486 (14.7) | 280 (8.5) | 9,311 (71.4) | 1,915 (14.7) | 1,780 (13.7) |
| Nov, 2020 | 16,244 (85.7) | 1,677 (8.9) | 998 (5.3) | 2,176 (75.7) | 449 (15.6) | 240 (8.4) | 8,670 (70.4) | 1,793 (14.6) | 1,812 (14.7) |
| Dec, 2020 | 16,948 (86.6) | 1,574 (8.0) | 1,030 (5.3) | 1,993 (75.3) | 422 (16.0) | 220 (8.3) | 9,322 (70.0) | 1,857 (14.0) | 2,084 (15.7) |
| Jan, 2021 | 15,804 (84.9) | 1,456 (7.8) | 1,331 (7.2) | 2,222 (76.0) | 491 (16.8) | 205 (7.0) | 8,935 (70.2) | 1,794 (14.1) | 1,958 (15.4) |
| Feb, 2021 | 15,563 (84.9) | 1,446 (7.9) | 1,305 (7.1) | 2,060 (75.3) | 451 (16.5) | 219 (8.0) | 7,860 (75.0) | 1,509 (14.4) | 1,084 (10.3) |
| Mar, 2021 | 18,996 (86.2) | 1,703 (7.7) | 1,325 (6.0) | 2,530 (77.5) | 501 (15.4) | 223 (6.8) | 10,468 (76.7) | 1,852 (13.6) | 1,277 (9.4) |
| Apr, 2021 | 17,890 (85.5) | 1,654 (7.9) | 1,354 (6.5) | 2,425 (76.7) | 506 (16.0) | 220 (7.0) | 8,892 (76.3) | 1,717 (14.7) | 968 (8.3) |
| May, 2021 | 16,981 (85.1) | 1,634 (8.2) | 1,326 (6.6) | 2,297 (76.8) | 469 (15.7) | 214 (7.2) | 9,464 (78.0) | 1,739 (14.3) | 909 (7.5) |
| Jun, 2021 | 18,023 (86.1) | 1,693 (8.1) | 1,207 (5.8) | 2,406 (76.0) | 525 (16.6) | 227 (7.2) | 9,164 (77.8) | 1,762 (15.0) | 844 (7.2) |
| Jul, 2021 | 17,543 (86.3) | 1,661 (8.2) | 1,109 (5.5) | 2,294 (76.1) | 415 (13.8) | 296 (9.8) | 7,803 (75.8) | 1,592 (15.5) | 900 (8.7) |
| Aug, 2021 | 21,049 (85.4) | 2,024 (8.2) | 1,558 (6.3) | 2,787 (77.8) | 535 (14.9) | 247 (6.9) | 8,277 (75.9) | 1,795 (16.5) | 820 (7.5) |
| Sep, 2021 | 20,572 (86.2) | 1,803 (7.6) | 1,474 (6.2) | 2,488 (78.0) | 441 (13.8) | 250 (7.8) | 10,389 (78.4) | 1,889 (14.2) | 936 (7.1) |
| Oct, 2021 | 19,551 (84.7) | 1,858 (8.1) | 1,633 (7.1) | 2,196 (76.4) | 453 (15.8) | 220 (7.7) | 11,126 (78.6) | 2,008 (14.2) | 976 (6.9) |
| Nov, 2021 | 17,976 (84.7) | 1,719 (8.1) | 1,509 (7.1) | 2,383 (78.1) | 426 (14.0) | 237 (7.8) | 10,861 (78.4) | 2,058 (14.9) | 868 (6.3) |
| Dec, 2021 | 17,190 (84.7) | 1,574 (7.8) | 1,516 (7.5) | 2,018 (76.4) | 374 (14.2) | 247 (9.3) | 10,617 (77.2) | 2,084 (15.2) | 986 (7.2) |
| Jan, 2022 | 19,018 (83.4) | 1,581 (6.9) | 2,183 (9.6) | 2,148 (76.4) | 420 (14.9) | 244 (8.7) | 9,856 (78.0) | 1,738 (13.7) | 993 (7.9) |
| Feb, 2022 | 17,679 (83.2) | 1,496 (7.0) | 2,047 (9.6) | 1,927 (74.7) | 409 (15.9) | 240 (9.3) | 8,779 (78.7) | 1,467 (13.2) | 835 (7.5) |
| Mar, 2022 | 21,747 (84.2) | 1,946 (7.5) | 2,090 (8.1) | 2,382 (77.4) | 452 (14.7) | 236 (7.7) | 12,678 (79.1) | 2,055 (12.8) | 1,174 (7.3) |
| Apr, 2022 | 18,603 (84.5) | 1,685 (7.7) | 1,704 (7.7) | 2,406 (76.7) | 442 (14.1) | 282 (9.0) | 10,866 (80.1) | 1,735 (12.8) | 897 (6.6) |

| | Payer, n (%) | | | | | | | | |
|-----------|---------------|-------------|--------------|--------------|------------|------------|---------------|--------------|--------------|
| | Medicaid | Private | Uninsured | Medicaid | Private | Uninsured | Medicaid | Private | Uninsured |
| | California | | | Indiana | | | Massachusetts | | |
| May, 2022 | 18,986 (83.2) | 1,812 (7.9) | 1,984 (8.7) | 2,200 (77.4) | 374 (13.2) | 261 (9.2) | 11,565 (80.0) | 1,929 (13.3) | 869 (6.0) |
| Jun, 2022 | 17,719 (84.3) | 1,570 (7.5) | 1,703 (8.1) | 2,106 (77.2) | 404 (14.8) | 218 (8.0) | 10,176 (79.5) | 1,718 (13.4) | 844 (6.6) |
| Jul, 2022 | 15,274 (82.6) | 1,505 (8.1) | 1,678 (9.1) | 1,972 (78.0) | 343 (13.6) | 212 (8.4) | 7,885 (77.3) | 1,485 (14.6) | 813 (8.0) |
| Aug, 2022 | 20,579 (83.0) | 1,969 (7.9) | 2,207 (8.9) | 2,723 (76.3) | 499 (14.0) | 339 (9.5) | 8,947 (78.7) | 1,636 (14.4) | 778 (6.8) |
| Sep, 2022 | 20,263 (84.4) | 1,822 (7.6) | 1,897 (7.9) | 2,672 (78.0) | 474 (13.8) | 272 (7.9) | 9,799 (79.1) | 1,589 (12.8) | 962 (7.8) |
| Oct, 2022 | 20,908 (84.3) | 2,019 (8.1) | 1,832 (7.4) | 2,623 (78.4) | 438 (13.1) | 281 (8.4) | 11,620 (79.7) | 1,915 (13.1) | 994 (6.8) |
| Nov, 2022 | 20,982 (83.8) | 2,059 (8.2) | 1,945 (7.8) | 2,541 (76.4) | 464 (14.0) | 316 (9.5) | 12,038 (79.6) | 2,038 (13.5) | 980 (6.5) |
| Dec, 2022 | 19,177 (85.2) | 1,819 (8.1) | 1,471 (6.5) | 2,205 (74.3) | 421 (14.2) | 327 (11.0) | 11,159 (79.3) | 1,914 (13.6) | 958 (6.8) |
| Jan, 2023 | 19,628 (85.0) | 1,780 (7.7) | 1,643 (7.1) | 2,347 (74.7) | 419 (13.3) | 366 (11.7) | 10,793 (79.9) | 1,769 (13.1) | 898 (6.6) |
| Feb, 2023 | 19,549 (84.6) | 1,731 (7.5) | 1,797 (7.8) | 2,439 (73.7) | 504 (15.2) | 359 (10.8) | 9,721 (80.1) | 1,589 (13.1) | 781 (6.4) |
| Mar, 2023 | 23,213 (84.7) | 2,117 (7.7) | 2,035 (7.4) | 2,548 (73.3) | 467 (13.4) | 455 (13.1) | 12,640 (79.5) | 2,127 (13.4) | 1,054 (6.6) |
| Apr, 2023 | 19,740 (85.1) | 1,768 (7.6) | 1,636 (7.1) | 2,406 (75.7) | 444 (14.0) | 323 (10.2) | 9,736 (79.2) | 1,751 (14.3) | 754 (6.1) |
| May, 2023 | 21,577 (85.1) | 1,985 (7.8) | 1,725 (6.8) | 2,624 (74.8) | 539 (15.4) | 341 (9.7) | 12,084 (78.9) | 2,204 (14.4) | 945 (6.2) |
| Jun, 2023 | 18,418 (85.5) | 1,736 (8.1) | 1,332 (6.2) | 2,212 (72.0) | 467 (15.2) | 389 (12.7) | 7,364 (77.2) | 1,321 (13.8) | 822 (8.6) |
| Jul, 2023 | 16,967 (86.2) | 1,533 (7.8) | 1,119 (5.7) | 2,183 (71.3) | 488 (15.9) | 390 (12.7) | 5,573 (76.0) | 1,011 (13.8) | 728 (9.9) |
| Aug, 2023 | 20,852 (85.0) | 2,092 (8.5) | 1,487 (6.1) | 3,013 (69.9) | 692 (16.1) | 598 (13.9) | 6,755 (78.0) | 1,131 (13.1) | 742 (8.6) |
| Sep, 2023 | 19,775 (85.6) | 1,682 (7.3) | 1,480 (6.4) | 2,478 (71.3) | 569 (16.4) | 424 (12.2) | 7,453 (76.5) | 1,124 (11.5) | 1,108 (11.4) |
| Oct, 2023 | 21,894 (84.6) | 2,012 (7.8) | 1,730 (6.7) | 2,555 (70.4) | 573 (15.8) | 499 (13.7) | 9,422 (79.0) | 1,405 (11.8) | 1,049 (8.8) |
| Nov, 2023 | 19,223 (81.3) | 1,861 (7.9) | 2,395 (10.1) | 2,398 (69.2) | 536 (15.5) | 527 (15.2) | 9,090 (79.7) | 1,327 (11.6) | 947 (8.3) |
| Dec, 2023 | 17,211 (80.0) | 1,658 (7.7) | 2,547 (11.8) | 2,264 (66.1) | 483 (14.1) | 676 (19.7) | 8,194 (78.4) | 1,207 (11.5) | 1,002 (9.6) |

| | Payer, n (%) | | | | | | | | |
|-----------|--------------|----------|------------|--------------|------------|-----------|----------------|------------|-----------|
| | Medicaid | Private | Uninsured | Medicaid | Private | Uninsured | Medicaid | Private | Uninsured |
| | Minnesota | | | Montana | | | North Carolina | | |
| Jan, 2019 | 660 (83.7) | 26 (3.3) | 103 (13.1) | 851 (75.4) | 246 (21.8) | 26 (2.3) | 361 (66.5) | 153 (28.2) | 29 (5.3) |
| Feb, 2019 | 505 (88.3) | 15 (2.6) | 52 (9.1) | 875 (75.3) | 249 (21.4) | 23 (2.0) | 317 (62.6) | 164 (32.4) | 22 (4.3) |
| Mar, 2019 | 653 (90.3) | Masked | 61 (8.4) | 971 (77.7) | 235 (18.8) | 32 (2.6) | 379 (60.2) | 207 (32.9) | 43 (6.8) |
| Apr, 2019 | 689 (89.5) | 15 (1.9) | 66 (8.6) | 969 (79.2) | 211 (17.2) | 35 (2.9) | 415 (66.5) | 178 (28.5) | 29 (4.6) |
| May, 2019 | 681 (88.8) | 12 (1.6) | 74 (9.6) | 939 (76.4) | 237 (19.3) | 37 (3.0) | 360 (63.5) | 164 (28.9) | 41 (7.2) |
| Jun, 2019 | 534 (87.7) | 15 (2.5) | 60 (9.9) | 578 (73.3) | 156 (19.8) | 37 (4.7) | 301 (61.1) | 147 (29.8) | 44 (8.9) |
| Jul, 2019 | 585 (85.0) | 14 (2.0) | 89 (12.9) | 558 (73.6) | 155 (20.4) | 35 (4.6) | 336 (64.1) | 161 (30.7) | 25 (4.8) |
| Aug, 2019 | 631 (82.1) | 25 (3.3) | 113 (14.7) | 702 (63.4) | 338 (30.5) | 53 (4.8) | 393 (63.2) | 175 (28.1) | 52 (8.4) |
| Sep, 2019 | 570 (83.7) | 25 (3.7) | 86 (12.6) | 743 (71.7) | 229 (22.1) | 57 (5.5) | 462 (67.7) | 159 (23.3) | 59 (8.7) |
| Oct, 2019 | 685 (79.3) | 28 (3.2) | 151 (17.5) | 1,027 (72.1) | 333 (23.4) | 59 (4.1) | 519 (66.5) | 195 (25.0) | 65 (8.3) |
| Nov, 2019 | 565 (81.4) | 24 (3.5) | 105 (15.1) | 906 (74.1) | 242 (19.8) | 67 (5.5) | 483 (64.7) | 219 (29.3) | 45 (6.0) |
| Dec, 2019 | 623 (83.6) | 32 (4.3) | 90 (12.1) | 765 (71.8) | 229 (21.5) | 58 (5.4) | 438 (65.2) | 198 (29.5) | 34 (5.1) |
| Jan, 2020 | 662 (83.9) | 20 (2.5) | 107 (13.6) | 979 (77.4) | 242 (19.1) | 40 (3.2) | 554 (70.0) | 185 (23.4) | 51 (6.4) |
| Feb, 2020 | 599 (86.2) | 20 (2.9) | 76 (10.9) | 845 (71.8) | 269 (22.9) | 53 (4.5) | 552 (66.3) | 225 (27.0) | 56 (6.7) |
| Mar, 2020 | 414 (82.8) | 12 (2.4) | 74 (14.8) | 625 (71.8) | 189 (21.7) | 48 (5.5) | 478 (70.3) | 157 (23.1) | 45 (6.6) |
| Apr, 2020 | 355 (86.6) | 18 (4.4) | 37 (9.0) | 357 (73.0) | 99 (20.2) | 32 (6.5) | 260 (69.5) | 83 (22.2) | 31 (8.3) |
| May, 2020 | 369 (87.0) | 23 (5.4) | 32 (7.5) | 405 (74.4) | 116 (21.3) | 23 (4.2) | 265 (68.1) | 96 (24.7) | 27 (6.9) |

| | Payer, n (%) | | | | | | | | |
|-----------|--------------|------------|------------|------------|------------|-----------|----------------|------------|------------|
| | Medicaid | Private | Uninsured | Medicaid | Private | Uninsured | Medicaid | Private | Uninsured |
| | Minnesota | | | Montana | | | North Carolina | | |
| Jun, 2020 | 459 (80.0) | 45 (7.8) | 64 (11.1) | 501 (70.2) | 167 (23.4) | 46 (6.4) | 297 (61.1) | 125 (25.7) | 63 (13.0) |
| Jul, 2020 | 509 (77.9) | 48 (7.4) | 88 (13.5) | 413 (60.5) | 170 (24.9) | 96 (14.1) | 320 (61.8) | 139 (26.8) | 57 (11.0) |
| Aug, 2020 | 667 (83.4) | 39 (4.9) | 82 (10.3) | 517 (60.8) | 282 (33.1) | 39 (4.6) | 332 (59.6) | 144 (25.9) | 81 (14.5) |
| Sep, 2020 | 633 (76.8) | 88 (10.7) | 100 (12.1) | 609 (62.9) | 284 (29.3) | 72 (7.4) | 396 (66.2) | 151 (25.3) | 47 (7.9) |
| Oct, 2020 | 745 (77.6) | 93 (9.7) | 120 (12.5) | 593 (64.8) | 266 (29.1) | 50 (5.5) | 411 (64.7) | 158 (24.9) | 65 (10.2) |
| Nov, 2020 | 709 (73.8) | 125 (13.0) | 123 (12.8) | 526 (62.8) | 271 (32.4) | 35 (4.2) | 324 (61.5) | 151 (28.7) | 51 (9.7) |
| Dec, 2020 | 678 (82.4) | 45 (5.5) | 97 (11.8) | 453 (66.2) | 192 (28.1) | 27 (3.9) | 308 (64.6) | 130 (27.3) | 36 (7.5) |
| Jan, 2021 | 735 (81.3) | 59 (6.5) | 107 (11.8) | 496 (67.7) | 206 (28.1) | 27 (3.7) | 312 (64.2) | 138 (28.4) | 33 (6.8) |
| Feb, 2021 | 649 (87.6) | 25 (3.4) | 67 (9.0) | 524 (70.1) | 196 (26.2) | 26 (3.5) | 350 (66.8) | 123 (23.5) | 48 (9.2) |
| Mar, 2021 | 791 (86.9) | 38 (4.2) | 80 (8.8) | 647 (70.3) | 246 (26.7) | 19 (2.1) | 448 (67.2) | 164 (24.6) | 47 (7.0) |
| Apr, 2021 | 862 (88.4) | 35 (3.6) | 77 (7.9) | 520 (71.4) | 178 (24.5) | 24 (3.3) | 370 (68.9) | 122 (22.7) | 43 (8.0) |
| May, 2021 | 809 (89.2) | 38 (4.2) | 59 (6.5) | 505 (71.5) | 174 (24.6) | 21 (3.0) | 407 (69.9) | 128 (22.0) | 42 (7.2) |
| Jun, 2021 | 748 (83.1) | 32 (3.6) | 120 (13.3) | 452 (69.5) | 158 (24.3) | 29 (4.5) | 490 (67.3) | 186 (25.5) | 52 (7.1) |
| Jul, 2021 | 782 (85.1) | 35 (3.8) | 102 (11.1) | 420 (64.5) | 200 (30.7) | 24 (3.7) | 428 (68.4) | 138 (22.0) | 59 (9.4) |
| Aug, 2021 | 956 (81.4) | 55 (4.7) | 164 (14.0) | 554 (60.2) | 322 (35.0) | 35 (3.8) | 598 (69.5) | 198 (23.0) | 63 (7.3) |
| Sep, 2021 | 908 (77.7) | 66 (5.7) | 194 (16.6) | 717 (67.0) | 319 (29.8) | 24 (2.2) | 608 (66.4) | 230 (25.1) | 75 (8.2) |
| Oct, 2021 | 991 (83.8) | 50 (4.2) | 141 (11.9) | 641 (65.0) | 311 (31.5) | 29 (2.9) | 557 (68.7) | 202 (24.9) | 51 (6.3) |
| Nov, 2021 | 901 (81.0) | 51 (4.6) | 161 (14.5) | 678 (66.3) | 289 (28.3) | 47 (4.6) | 543 (68.6) | 171 (21.6) | 77 (9.7) |
| Dec, 2021 | 859 (84.1) | 49 (4.8) | 113 (11.1) | 515 (65.8) | 234 (29.9) | 30 (3.8) | 510 (67.1) | 193 (25.4) | 57 (7.5) |
| Jan, 2022 | 822 (79.7) | 55 (5.3) | 154 (14.9) | 645 (71.0) | 225 (24.8) | 31 (3.4) | 458 (66.7) | 170 (24.7) | 56 (8.2) |
| Feb, 2022 | 801 (83.7) | 33 (3.4) | 122 (12.7) | 444 (67.2) | 191 (28.9) | 25 (3.8) | 486 (70.2) | 162 (23.4) | 41 (5.9) |
| Mar, 2022 | 1,000 (84.3) | 39 (3.3) | 147 (12.4) | 597 (73.7) | 187 (23.1) | 17 (2.1) | 615 (71.3) | 189 (21.9) | 57 (6.6) |
| Apr, 2022 | 811 (83.0) | 32 (3.3) | 134 (13.7) | 518 (70.6) | 187 (25.5) | 25 (3.4) | 453 (69.5) | 147 (22.5) | 48 (7.4) |
| May, 2022 | 892 (82.6) | 36 (3.3) | 152 (14.1) | 576 (73.8) | 174 (22.3) | 26 (3.3) | 556 (69.2) | 193 (24.0) | 53 (6.6) |
| Jun, 2022 | 857 (82.2) | 35 (3.4) | 150 (14.4) | 426 (74.3) | 125 (21.8) | 19 (3.3) | 471 (64.2) | 196 (26.7) | 65 (8.9) |
| Jul, 2022 | 801 (80.3) | 39 (3.9) | 158 (15.8) | 350 (67.0) | 138 (26.4) | 29 (5.6) | 440 (66.3) | 162 (24.4) | 61 (9.2) |
| Aug, 2022 | 978 (81.2) | 43 (3.6) | 184 (15.3) | 455 (59.1) | 271 (35.2) | 34 (4.4) | 596 (67.2) | 206 (23.2) | 84 (9.5) |
| Sep, 2022 | 962 (79.9) | 44 (3.7) | 198 (16.4) | 565 (73.4) | 170 (22.1) | 24 (3.1) | 563 (67.9) | 164 (19.8) | 98 (11.8) |
| Oct, 2022 | 908 (83.2) | 36 (3.3) | 148 (13.6) | 570 (69.9) | 199 (24.4) | 31 (3.8) | 659 (68.3) | 218 (22.6) | 88 (9.1) |
| Nov, 2022 | 795 (83.9) | 28 (3.0) | 124 (13.1) | 551 (70.4) | 175 (22.3) | 44 (5.6) | 633 (68.0) | 228 (24.5) | 69 (7.4) |
| Dec, 2022 | 817 (84.8) | 27 (2.8) | 119 (12.4) | 547 (69.0) | 180 (22.7) | 55 (6.9) | 527 (65.6) | 200 (24.9) | 75 (9.3) |
| Jan, 2023 | 793 (81.9) | 33 (3.4) | 142 (14.7) | 577 (73.0) | 141 (17.8) | 56 (7.1) | 500 (67.8) | 158 (21.4) | 79 (10.7) |
| Feb, 2023 | 762 (82.1) | 24 (2.6) | 142 (15.3) | 588 (74.5) | 142 (18.0) | 48 (6.1) | 631 (69.9) | 180 (19.9) | 90 (10.0) |
| Mar, 2023 | 989 (84.6) | 16 (1.4) | 164 (14.0) | 658 (75.5) | 159 (18.2) | 39 (4.5) | 615 (67.5) | 190 (20.9) | 104 (11.4) |
| Apr, 2023 | 972 (83.0) | 27 (2.3) | 172 (14.7) | 560 (72.5) | 155 (20.1) | 43 (5.6) | 407 (64.6) | 159 (25.2) | 61 (9.7) |
| May, 2023 | 1,143 (81.9) | 29 (2.1) | 224 (16.0) | 576 (74.0) | 151 (19.4) | 36 (4.6) | 579 (68.3) | 176 (20.8) | 90 (10.6) |
| Jun, 2023 | 1,057 (82.0) | 19 (1.5) | 213 (16.5) | 386 (66.1) | 130 (22.3) | 46 (7.9) | 471 (68.8) | 154 (22.5) | 59 (8.6) |
| Jul, 2023 | 885 (80.3) | 16 (1.5) | 201 (18.2) | 277 (64.3) | 113 (26.2) | 30 (7.0) | 538 (68.0) | 161 (20.4) | 91 (11.5) |
| Aug, 2023 | 1,091 (80.0) | 42 (3.1) | 231 (16.9) | 400 (56.1) | 228 (32.0) | 66 (9.3) | 596 (65.5) | 215 (23.6) | 93 (10.2) |
| Sep, 2023 | 886 (78.7) | 16 (1.4) | 224 (19.9) | 427 (68.2) | 131 (20.9) | 59 (9.4) | 650 (69.4) | 197 (21.0) | 90 (9.6) |
| Oct, 2023 | 1,004 (77.1) | 36 (2.8) | 263 (20.2) | 455 (63.3) | 165 (22.9) | 95 (13.2) | 718 (67.2) | 251 (23.5) | 96 (9.0) |
| Nov, 2023 | 922 (77.3) | 32 (2.7) | 237 (19.9) | 490 (64.8) | 175 (23.1) | 84 (11.1) | 764 (66.8) | 294 (25.7) | 78 (6.8) |

| | Payer, n (%) | | | | | | | | |
|-----------|--------------|----------|------------|------------|------------|-----------|----------------|------------|-----------|
| | Medicaid | Private | Uninsured | Medicaid | Private | Uninsured | Medicaid | Private | Uninsured |
| | Minnesota | | | Montana | | | North Carolina | | |
| Dec, 2023 | 763 (77.9) | 22 (2.2) | 194 (19.8) | 395 (63.4) | 157 (25.2) | 51 (8.2) | 622 (66.4) | 238 (25.4) | 71 (7.6) |

| | Payer, n (%) | | | | | | | | |
|-----------|--------------|------------|--------------|---------------|--------------|--------------|--------------|-----------|------------|
| | Medicaid | Private | Uninsured | Medicaid | Private | Uninsured | Medicaid | Private | Uninsured |
| | Ohio | | | Oregon | | | Texas | | |
| Jan, 2019 | 4,888 (77.3) | 361 (5.7) | 1,053 (16.6) | 21,487 (74.2) | 3,000 (10.4) | 4,386 (15.1) | 1,048 (68.8) | 45 (3.0) | 272 (17.9) |
| Feb, 2019 | 5,250 (77.1) | 377 (5.5) | 1,151 (16.9) | 19,866 (73.1) | 2,906 (10.7) | 4,296 (15.8) | 975 (63.2) | 47 (3.0) | 320 (20.8) |
| Mar, 2019 | 5,294 (77.3) | 404 (5.9) | 1,125 (16.4) | 20,694 (74.9) | 2,785 (10.1) | 4,046 (14.6) | 990 (63.6) | 57 (3.7) | 319 (20.5) |
| Apr, 2019 | 6,385 (77.7) | 408 (5.0) | 1,379 (16.8) | 22,987 (74.0) | 3,247 (10.5) | 4,719 (15.2) | 976 (61.2) | 62 (3.9) | 350 (21.9) |
| May, 2019 | 5,022 (78.4) | 314 (4.9) | 1,044 (16.3) | 21,999 (73.4) | 3,124 (10.4) | 4,710 (15.7) | 821 (62.2) | 53 (4.0) | 264 (20.0) |
| Jun, 2019 | 2,415 (76.7) | 195 (6.2) | 529 (16.8) | 16,162 (75.9) | 2,037 (9.6) | 3,019 (14.2) | 858 (61.8) | 59 (4.3) | 289 (20.8) |
| Jul, 2019 | 2,685 (74.4) | 216 (6.0) | 705 (19.5) | 16,037 (77.2) | 1,977 (9.5) | 2,676 (12.9) | 802 (63.2) | 55 (4.3) | 256 (20.2) |
| Aug, 2019 | 4,201 (76.5) | 325 (5.9) | 943 (17.2) | 17,046 (76.1) | 2,147 (9.6) | 3,054 (13.6) | 771 (57.4) | 48 (3.6) | 319 (23.8) |
| Sep, 2019 | 5,074 (72.0) | 316 (4.5) | 1,634 (23.2) | 17,418 (73.3) | 2,312 (9.7) | 3,691 (15.5) | 728 (61.4) | 35 (3.0) | 305 (25.7) |
| Oct, 2019 | 6,424 (74.9) | 476 (5.6) | 1,624 (18.9) | 23,451 (73.7) | 3,013 (9.5) | 4,969 (15.6) | 1,040 (65.1) | 48 (3.0) | 397 (24.8) |
| Nov, 2019 | 5,201 (74.5) | 405 (5.8) | 1,342 (19.2) | 22,101 (76.0) | 2,618 (9.0) | 4,081 (14.0) | 850 (64.4) | 40 (3.0) | 324 (24.6) |
| Dec, 2019 | 5,048 (77.2) | 412 (6.3) | 1,038 (15.9) | 22,287 (77.0) | 2,590 (9.0) | 3,728 (12.9) | 686 (65.1) | 31 (2.9) | 291 (27.6) |
| Jan, 2020 | 6,115 (76.7) | 440 (5.5) | 1,358 (17.0) | 23,643 (75.6) | 2,820 (9.0) | 4,436 (14.2) | 977 (63.8) | 65 (4.2) | 440 (28.7) |
| Feb, 2020 | 5,786 (76.8) | 435 (5.8) | 1,263 (16.8) | 23,808 (74.2) | 3,142 (9.8) | 4,783 (14.9) | 1,055 (63.1) | 56 (3.3) | 497 (29.7) |
| Mar, 2020 | 4,086 (75.9) | 374 (6.9) | 881 (16.4) | 16,683 (70.9) | 2,261 (9.6) | 4,356 (18.5) | 941 (68.3) | 54 (3.9) | 355 (25.8) |
| Apr, 2020 | 2,494 (77.6) | 264 (8.2) | 428 (13.3) | 9,953 (65.2) | 1,642 (10.7) | 3,547 (23.2) | 820 (72.8) | 37 (3.3) | 248 (22.0) |
| May, 2020 | 2,179 (77.4) | 239 (8.5) | 376 (13.4) | 10,224 (69.2) | 1,556 (10.5) | 2,906 (19.7) | 795 (71.8) | 41 (3.7) | 259 (23.4) |
| Jun, 2020 | 2,464 (82.4) | 235 (7.9) | 279 (9.3) | 12,143 (70.3) | 1,640 (9.5) | 3,449 (20.0) | 1,031 (68.6) | 112 (7.5) | 319 (21.2) |
| Jul, 2020 | 2,792 (81.1) | 293 (8.5) | 317 (9.2) | 13,126 (73.3) | 1,703 (9.5) | 3,053 (17.0) | 851 (70.0) | 61 (5.0) | 279 (22.9) |
| Aug, 2020 | 2,972 (80.1) | 339 (9.1) | 360 (9.7) | 14,151 (76.9) | 1,659 (9.0) | 2,548 (13.9) | 843 (67.9) | 44 (3.5) | 329 (26.5) |
| Sep, 2020 | 3,499 (79.8) | 331 (7.5) | 506 (11.5) | 14,219 (74.3) | 1,720 (9.0) | 3,152 (16.5) | 934 (67.6) | 56 (4.1) | 375 (27.2) |
| Oct, 2020 | 3,884 (80.3) | 360 (7.4) | 555 (11.5) | 18,757 (77.6) | 2,189 (9.1) | 3,166 (13.1) | 963 (64.1) | 66 (4.4) | 450 (29.9) |
| Nov, 2020 | 3,404 (77.3) | 410 (9.3) | 546 (12.4) | 16,236 (77.4) | 1,868 (8.9) | 2,792 (13.3) | 881 (70.3) | 58 (4.6) | 289 (23.0) |
| Dec, 2020 | 3,340 (78.5) | 430 (10.1) | 440 (10.3) | 16,419 (76.2) | 1,894 (8.8) | 3,186 (14.8) | 825 (66.2) | 70 (5.6) | 316 (25.3) |
| Jan, 2021 | 2,997 (79.5) | 297 (7.9) | 441 (11.7) | 16,178 (75.6) | 2,031 (9.5) | 3,136 (14.7) | 893 (70.0) | 74 (5.8) | 262 (20.5) |
| Feb, 2021 | 3,073 (79.3) | 321 (8.3) | 456 (11.8) | 16,522 (74.5) | 2,168 (9.8) | 3,436 (15.5) | 694 (71.8) | 30 (3.1) | 198 (20.5) |
| Mar, 2021 | 4,277 (81.3) | 386 (7.3) | 558 (10.6) | 19,862 (76.0) | 2,489 (9.5) | 3,740 (14.3) | 958 (68.9) | 50 (3.6) | 302 (21.7) |
| Apr, 2021 | 4,604 (81.3) | 387 (6.8) | 650 (11.5) | 19,745 (74.8) | 2,743 (10.4) | 3,849 (14.6) | 976 (69.6) | 40 (2.9) | 321 (22.9) |
| May, 2021 | 3,728 (80.6) | 361 (7.8) | 513 (11.1) | 18,007 (75.3) | 2,429 (10.2) | 3,427 (14.3) | 748 (70.0) | 30 (2.8) | 256 (23.9) |
| Jun, 2021 | 2,944 (81.1) | 293 (8.1) | 370 (10.2) | 17,165 (76.4) | 2,203 (9.8) | 3,056 (13.6) | 801 (67.3) | 32 (2.7) | 329 (27.6) |
| Jul, 2021 | 2,649 (80.9) | 333 (10.2) | 279 (8.5) | 15,025 (75.8) | 2,126 (10.7) | 2,612 (13.2) | 821 (65.9) | 42 (3.4) | 357 (28.7) |
| Aug, 2021 | 3,759 (81.4) | 377 (8.2) | 462 (10.0) | 18,103 (76.5) | 2,706 (11.4) | 2,819 (11.9) | 1,002 (66.5) | 63 (4.2) | 407 (27.0) |
| Sep, 2021 | 4,763 (80.8) | 466 (7.9) | 636 (10.8) | 19,271 (74.0) | 2,956 (11.3) | 3,772 (14.5) | 966 (70.1) | 60 (4.4) | 320 (23.2) |
| Oct, 2021 | 4,735 (79.7) | 425 (7.2) | 753 (12.7) | 19,694 (72.4) | 3,294 (12.1) | 4,164 (15.3) | 1,010 (72.6) | 33 (2.4) | 327 (23.5) |
| Nov, 2021 | 4,605 (80.5) | 432 (7.6) | 651 (11.4) | 18,628 (73.9) | 3,110 (12.3) | 3,418 (13.6) | 803 (71.5) | 31 (2.8) | 261 (23.2) |
| Dec, 2021 | 3,918 (80.9) | 380 (7.8) | 518 (10.7) | 16,621 (76.6) | 2,385 (11.0) | 2,661 (12.3) | 712 (73.7) | 23 (2.4) | 214 (22.2) |

| | Payer, n (%) | | | | | | | | |
|-----------|--------------|-----------|--------------|---------------|--------------|--------------|--------------|----------|------------|
| | Medicaid | Private | Uninsured | Medicaid | Private | Uninsured | Medicaid | Private | Uninsured |
| | Ohio | | | Oregon | | | Texas | | |
| Jan, 2022 | 3,575 (82.0) | 317 (7.3) | 444 (10.2) | 17,977 (74.1) | 2,988 (12.3) | 3,227 (13.3) | 908 (74.1) | 36 (2.9) | 272 (22.2) |
| Feb, 2022 | 3,763 (82.0) | 333 (7.3) | 473 (10.3) | 18,799 (74.9) | 3,156 (12.6) | 3,079 (12.3) | 765 (66.8) | 31 (2.7) | 343 (29.9) |
| Mar, 2022 | 4,762 (82.1) | 413 (7.1) | 605 (10.4) | 21,599 (75.8) | 3,279 (11.5) | 3,539 (12.4) | 982 (66.1) | 32 (2.2) | 455 (30.6) |
| Apr, 2022 | 4,920 (82.7) | 389 (6.5) | 624 (10.5) | 20,782 (75.9) | 3,134 (11.4) | 3,403 (12.4) | 962 (67.8) | 45 (3.2) | 411 (29.0) |
| May, 2022 | 4,572 (83.7) | 378 (6.9) | 497 (9.1) | 20,676 (75.9) | 2,964 (10.9) | 3,559 (13.1) | 979 (72.0) | 45 (3.3) | 333 (24.5) |
| Jun, 2022 | 3,059 (83.9) | 284 (7.8) | 283 (7.8) | 17,635 (76.2) | 2,576 (11.1) | 2,897 (12.5) | 1,052 (74.1) | 44 (3.1) | 304 (21.4) |
| Jul, 2022 | 2,656 (82.8) | 278 (8.7) | 217 (6.8) | 14,273 (77.7) | 2,031 (11.1) | 2,036 (11.1) | 890 (70.3) | 44 (3.5) | 305 (24.1) |
| Aug, 2022 | 4,419 (82.7) | 387 (7.2) | 454 (8.5) | 17,398 (78.1) | 2,643 (11.9) | 2,214 (9.9) | 1,108 (67.0) | 46 (2.8) | 455 (27.5) |
| Sep, 2022 | 5,316 (82.0) | 420 (6.5) | 646 (10.0) | 17,681 (75.7) | 2,936 (12.6) | 2,698 (11.5) | 1,056 (69.9) | 50 (3.3) | 337 (22.3) |
| Oct, 2022 | 5,575 (80.7) | 438 (6.3) | 752 (10.9) | 20,582 (74.8) | 3,732 (13.6) | 3,136 (11.4) | 1,015 (71.5) | 36 (2.5) | 304 (21.4) |
| Nov, 2022 | 5,016 (79.1) | 454 (7.2) | 676 (10.7) | 20,737 (75.6) | 3,625 (13.2) | 2,993 (10.9) | 880 (75.3) | 35 (3.0) | 205 (17.5) |
| Dec, 2022 | 4,287 (79.2) | 428 (7.9) | 505 (9.3) | 18,434 (78.2) | 2,739 (11.6) | 2,334 (9.9) | 796 (73.2) | 34 (3.1) | 216 (19.9) |
| Jan, 2023 | 4,995 (78.8) | 456 (7.2) | 659 (10.4) | 22,037 (76.1) | 3,632 (12.5) | 3,197 (11.0) | 848 (75.7) | 25 (2.2) | 186 (16.6) |
| Feb, 2023 | 5,231 (79.0) | 471 (7.1) | 717 (10.8) | 20,033 (75.4) | 3,345 (12.6) | 3,127 (11.8) | 909 (74.7) | 24 (2.0) | 232 (19.1) |
| Mar, 2023 | 5,670 (78.7) | 517 (7.2) | 802 (11.1) | 23,045 (76.3) | 3,784 (12.5) | 3,275 (10.8) | 942 (75.4) | 20 (1.6) | 227 (18.2) |
| Apr, 2023 | 5,605 (77.9) | 436 (6.1) | 848 (11.8) | 21,104 (76.3) | 3,458 (12.5) | 2,999 (10.8) | 822 (74.4) | 24 (2.2) | 189 (17.1) |
| May, 2023 | 5,585 (78.7) | 483 (6.8) | 798 (11.2) | 23,192 (76.6) | 3,707 (12.2) | 3,276 (10.8) | 859 (76.4) | 24 (2.1) | 177 (15.7) |
| Jun, 2023 | 3,520 (77.0) | 356 (7.8) | 508 (11.1) | 18,136 (77.3) | 2,816 (12.0) | 2,435 (10.4) | 849 (70.6) | 32 (2.7) | 237 (19.7) |
| Jul, 2023 | 3,289 (78.4) | 364 (8.7) | 455 (10.8) | 14,512 (79.1) | 2,084 (11.4) | 1,705 (9.3) | 821 (69.6) | 35 (3.0) | 241 (20.4) |
| Aug, 2023 | 5,398 (79.2) | 511 (7.5) | 836 (12.3) | 18,019 (78.3) | 2,720 (11.8) | 2,193 (9.5) | 1,046 (68.6) | 46 (3.0) | 321 (21.0) |
| Sep, 2023 | 5,779 (77.7) | 443 (6.0) | 1,151 (15.5) | 17,181 (75.4) | 2,898 (12.7) | 2,478 (10.9) | 906 (71.2) | 24 (1.9) | 253 (19.9) |
| Oct, 2023 | 5,936 (73.7) | 531 (6.6) | 1,480 (18.4) | 21,053 (74.9) | 3,601 (12.8) | 3,186 (11.3) | 968 (66.2) | 30 (2.1) | 353 (24.1) |
| Nov, 2023 | 5,216 (71.5) | 484 (6.6) | 1,474 (20.2) | 19,521 (75.0) | 3,264 (12.5) | 2,940 (11.3) | 839 (67.0) | 37 (3.0) | 275 (21.9) |
| Dec, 2023 | 4,187 (70.6) | 404 (6.8) | 1,245 (21.0) | 16,723 (77.0) | 2,413 (11.1) | 2,380 (11.0) | 790 (67.4) | 39 (3.3) | 240 (20.5) |

| | Payer, n (%) | | |
|-----------|--------------|-----------|--------------|
| | Medicaid | Private | Uninsured |
| | Washington | | |
| Jan, 2019 | 4,421 (79.1) | 117 (2.1) | 1,048 (18.7) |
| Feb, 2019 | 3,377 (82.1) | 97 (2.4) | 631 (15.3) |
| Mar, 2019 | 4,178 (77.3) | 116 (2.1) | 1,104 (20.4) |
| Apr, 2019 | 4,225 (79.1) | 102 (1.9) | 1,007 (18.9) |
| May, 2019 | 4,119 (76.1) | 115 (2.1) | 1,179 (21.8) |
| Jun, 2019 | 3,894 (78.6) | 115 (2.3) | 941 (19.0) |
| Jul, 2019 | 3,935 (87.9) | 88 (2.0) | 449 (10.0) |
| Aug, 2019 | 4,430 (86.7) | 131 (2.6) | 539 (10.5) |
| Sep, 2019 | 3,652 (81.2) | 104 (2.3) | 742 (16.5) |
| Oct, 2019 | 4,059 (78.2) | 128 (2.5) | 999 (19.2) |
| Nov, 2019 | 3,319 (75.8) | 117 (2.7) | 940 (21.5) |
| Dec, 2019 | 3,581 (78.5) | 108 (2.4) | 868 (19.0) |
| Jan, 2020 | 3,856 (81.1) | 115 (2.4) | 783 (16.5) |

| | Payer, n (%) | | |
|-----------|-------------------|-----------|--------------|
| | Medicaid | Private | Uninsured |
| | Washington | | |
| Feb, 2020 | 3,716 (81.8) | 90 (2.0) | 730 (16.1) |
| Mar, 2020 | 2,292 (81.7) | 83 (3.0) | 429 (15.3) |
| Apr, 2020 | 759 (84.3) | 22 (2.4) | 114 (12.7) |
| May, 2020 | 1,175 (78.0) | 25 (1.7) | 302 (20.1) |
| Jun, 2020 | 1,780 (77.9) | 55 (2.4) | 444 (19.4) |
| Jul, 2020 | 1,893 (73.6) | 58 (2.3) | 618 (24.0) |
| Aug, 2020 | 1,866 (72.2) | 51 (2.0) | 665 (25.7) |
| Sep, 2020 | 1,993 (70.5) | 54 (1.9) | 779 (27.6) |
| Oct, 2020 | 2,255 (71.3) | 66 (2.1) | 836 (26.4) |
| Nov, 2020 | 1,962 (70.0) | 63 (2.2) | 771 (27.5) |
| Dec, 2020 | 2,071 (68.9) | 94 (3.1) | 841 (28.0) |
| Jan, 2021 | 2,065 (68.9) | 70 (2.3) | 838 (28.0) |
| Feb, 2021 | 2,055 (68.3) | 63 (2.1) | 878 (29.2) |
| Mar, 2021 | 2,623 (68.5) | 88 (2.3) | 1,102 (28.8) |
| Apr, 2021 | 2,361 (69.6) | 62 (1.8) | 958 (28.2) |
| May, 2021 | 2,297 (72.2) | 67 (2.1) | 807 (25.4) |
| Jun, 2021 | 2,428 (73.6) | 61 (1.8) | 795 (24.1) |
| Jul, 2021 | 2,026 (73.9) | 49 (1.8) | 657 (24.0) |
| Aug, 2021 | 2,694 (74.5) | 82 (2.3) | 830 (23.0) |
| Sep, 2021 | 2,994 (73.8) | 89 (2.2) | 964 (23.8) |
| Oct, 2021 | 2,850 (71.7) | 84 (2.1) | 1,029 (25.9) |
| Nov, 2021 | 2,806 (72.8) | 63 (1.6) | 972 (25.2) |
| Dec, 2021 | 2,568 (70.8) | 64 (1.8) | 986 (27.2) |
| Jan, 2022 | 2,870 (73.4) | 53 (1.4) | 986 (25.2) |
| Feb, 2022 | 3,140 (79.6) | 62 (1.6) | 741 (18.8) |
| Mar, 2022 | 3,790 (80.0) | 80 (1.7) | 864 (18.2) |
| Apr, 2022 | 3,241 (81.5) | 61 (1.5) | 674 (16.9) |
| May, 2022 | 3,282 (79.3) | 96 (2.3) | 756 (18.3) |
| Jun, 2022 | 3,096 (80.4) | 103 (2.7) | 653 (16.9) |
| Jul, 2022 | 2,581 (86.8) | 40 (1.3) | 352 (11.8) |
| Aug, 2022 | 3,469 (88.7) | 66 (1.7) | 372 (9.5) |
| Sep, 2022 | 3,142 (83.3) | 109 (2.9) | 518 (13.7) |
| Oct, 2022 | 3,183 (80.4) | 119 (3.0) | 652 (16.5) |
| Nov, 2022 | 2,873 (79.3) | 96 (2.6) | 652 (18.0) |
| Dec, 2022 | 2,785 (80.8) | 63 (1.8) | 596 (17.3) |
| Jan, 2023 | 3,144 (76.8) | 66 (1.6) | 877 (21.4) |
| Feb, 2023 | 3,112 (78.3) | 59 (1.5) | 798 (20.1) |
| Mar, 2023 | 3,619 (77.8) | 72 (1.5) | 955 (20.5) |
| Apr, 2023 | 3,098 (80.1) | 54 (1.4) | 700 (18.1) |
| May, 2023 | 3,416 (79.6) | 57 (1.3) | 792 (18.4) |
| Jun, 2023 | 2,795 (79.5) | 59 (1.7) | 636 (18.1) |
| Jul, 2023 | 2,308 (87.4) | 52 (2.0) | 254 (9.6) |

| | Payer, n (%) | | |
|-----------|-------------------|----------|------------|
| | Medicaid | Private | Uninsured |
| | Washington | | |
| Aug, 2023 | 3,023 (88.9) | 85 (2.5) | 288 (8.5) |
| Sep, 2023 | 2,628 (85.9) | 52 (1.7) | 376 (12.3) |
| Oct, 2023 | 2,983 (80.1) | 62 (1.7) | 647 (17.4) |
| Nov, 2023 | 2,965 (76.8) | 61 (1.6) | 761 (19.7) |
| Dec, 2023 | 2,320 (81.6) | 36 (1.3) | 445 (15.6) |

References

1. Medicaid and CHIP Payment and Access Commission. *Racial and Ethnic Disparities in Medicaid: An Annotated Bibliography*. 2021.
2. Goldman AL, Sommers BD. Among Low-Income Adults Enrolled In Medicaid, Churning Decreased After The Affordable Care Act. *Health Aff (Millwood)*. 2020;39(1):85-93.
3. Sommers BD, Rosenbaum S. Issues in health reform: how changes in eligibility may move millions back and forth between medicaid and insurance exchanges. *Health Aff (Millwood)*. 2011;30(2):228-236.
4. Bindman AB, Chattopadhyay A, Auerback GM. Interruptions in Medicaid coverage and risk for hospitalization for ambulatory care-sensitive conditions. *Ann Intern Med*. 2008;149(12):854-860.
5. Hall AG, Harman JS, Zhang J. Lapses in Medicaid coverage: impact on cost and utilization among individuals with diabetes enrolled in Medicaid. *Med Care*. 2008;46(12):1219-1225.
6. Tolbert J, Ammuula M. 10 Things to Know About the Unwinding of the Medicaid Continuous Enrollment Provision. 2023; <https://www.kff.org/medicaid/issue-brief/10-things-to-know-about-the-unwinding-of-the-medicaid-continuous-enrollment-provision/>. Accessed 26 June, 2023.
7. Rosenbaum S, Collins SR, Musumeci M, Somodevilla A. Unwinding Continuous Medicaid Enrollment. *N Engl J Med*. 2023;388(12):1061-1063.